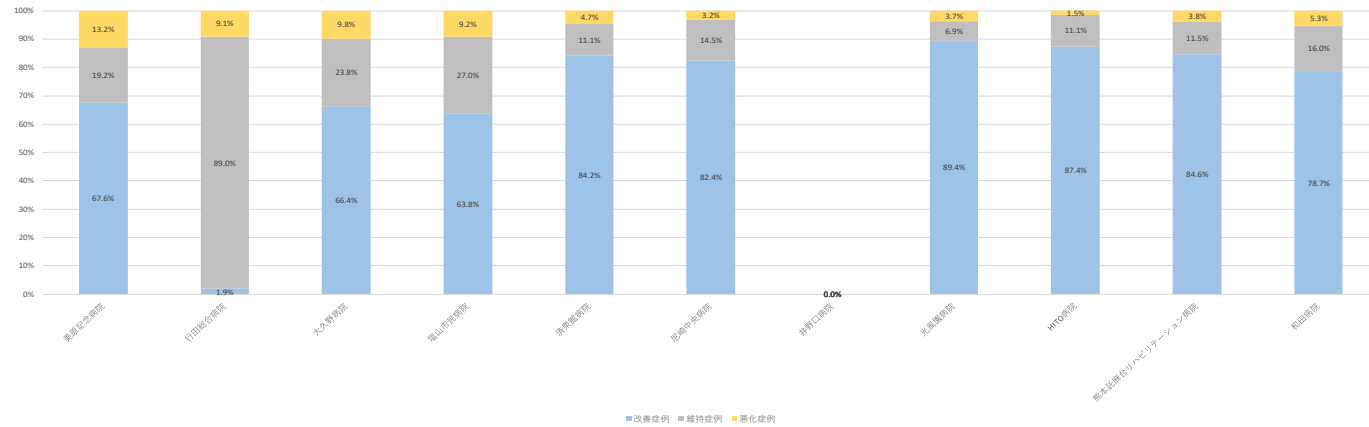


■ ADLスコアの改善率(回復リハ)

No	病院名	病棟数	2019年度			2019年4月			2019年5月			2019年6月			2019年7月			2019年8月			2019年9月			2019年10月			2019年11月			2019年12月			2020年1月			2020年2月			2020年3月			
			改善症例	維持症例	悪化症例	改善症例	維持症例	悪化症例	改善症例	維持症例	悪化症例	改善症例	維持症例	悪化症例	改善症例	維持症例	悪化症例	改善症例	維持症例	悪化症例	改善症例	維持症例	悪化症例	改善症例	維持症例	悪化症例	改善症例	維持症例	悪化症例	改善症例	維持症例	悪化症例	改善症例	維持症例	悪化症例	改善症例	維持症例	悪化症例				
1	栗原記念病院	83	67.6%	19.2%	13.2%	0.0%	0.0%	100.0%	50.0%	20.0%	30.0%	68.8%	25.0%	6.3%	62.1%	20.7%	17.2%	73.3%	16.7%	10.0%	73.8%	9.5%	16.7%	76.7%	16.7%	6.7%	56.8%	29.7%	13.5%	66.7%	16.7%	16.7%	65.7%	17.1%	17.1%	63.0%	28.3%	8.7%	78.4%	13.5%	8.1%	
2	行田総合病院	89	1.9%	89.0%	9.1%	0.0%	0.0%	0.0%	0.0%	100.0%	0.0%	0.0%	100.0%	0.0%	0.0%	85.7%	14.3%	0.0%	100.0%	0.0%	7.7%	92.3%	0.0%	0.0%	90.9%	9.1%	0.0%	100.0%	0.0%	0.0%	100.0%	0.0%	0.0%	16.7%	58.3%	25.0%	0.0%	85.7%	14.3%	0.0%	90.2%	9.8%
3	大久野病院	50	66.4%	23.8%	9.8%	0.0%	100.0%	0.0%	25.0%	50.0%	25.0%	40.0%	20.0%	40.0%	80.0%	20.0%	0.0%	37.5%	50.0%	12.5%	40.0%	30.0%	30.0%	77.8%	16.7%	5.6%	85.7%	14.3%	0.0%	82.4%	17.6%	0.0%	58.3%	33.3%	8.3%	76.9%	15.4%	7.7%	70.6%	17.6%	11.8%	
4	増山市民病院	50	63.8%	27.0%	9.2%	0.0%	0.0%	0.0%	42.9%	42.9%	14.3%	66.7%	33.3%	0.0%	75.0%	25.0%	0.0%	68.8%	12.5%	18.8%	76.5%	17.6%	5.9%	60.0%	20.0%	20.0%	80.0%	30.0%	20.0%	56.3%	31.3%	12.5%	40.0%	50.0%	10.0%	50.0%	50.0%	0.0%	90.5%	9.5%	0.0%	
5	津波聖徳院	50	84.2%	11.1%	4.7%	0.0%	0.0%	0.0%	87.5%	12.5%	0.0%	81.0%	9.5%	9.5%	90.3%	3.2%	6.5%	77.1%	14.3%	8.6%	85.4%	10.4%	4.2%	84.1%	9.1%	6.8%	88.9%	11.1%	0.0%	83.3%	14.3%	2.4%	86.4%	9.1%	4.5%	85.1%	14.9%	0.0%	78.0%	12.2%	9.8%	
6	尾崎中央病院	45	82.4%	14.5%	3.2%	100.0%	0.0%	0.0%	70.0%	30.0%	0.0%	81.3%	18.8%	0.0%	87.0%	4.3%	8.7%	95.8%	4.2%	0.0%	94.7%	5.3%	0.0%	83.3%	8.3%	8.3%	77.3%	22.7%	0.0%	57.1%	38.1%	4.8%	75.0%	20.0%	5.0%	88.9%	5.6%	5.6%	87.0%	13.0%	0.0%	
7	井野口病院	49	-	-	-	-	-	-	-	-	-	-	-	-	-	-	-	-	-	-	-	-	-	-	-	-	-	-	-	-	-	-	-	-	-	-	-	-	-	-	-	
8	光風園病院	60	89.4%	6.9%	3.7%	100.0%	0.0%	0.0%	83.3%	16.7%	0.0%	100.0%	0.0%	0.0%	83.3%	0.0%	0.0%	16.7%	94.4%	0.0%	5.6%	95.2%	4.8%	0.0%	90.9%	9.1%	0.0%	95.0%	5.0%	0.0%	93.8%	6.3%	0.0%	70.4%	22.2%	7.4%	89.5%	5.3%	5.3%	95.8%	4.2%	0.0%
9	HITO病院	50	87.4%	11.1%	1.5%	89.3%	10.7%	0.0%	83.3%	11.1%	5.6%	78.9%	21.1%	0.0%	92.0%	8.0%	0.0%	81.0%	14.3%	4.8%	84.6%	11.5%	3.8%	92.0%	8.0%	0.0%	92.3%	7.7%	0.0%	95.2%	4.8%	0.0%	80.0%	15.0%	5.0%	82.4%	17.6%	0.0%	91.7%	8.3%	0.0%	
10	熊本拓摩自リハビリテーション病院	94	84.6%	11.5%	3.8%	33.3%	33.3%	33.3%	86.7%	13.3%	0.0%	76.5%	20.6%	2.9%	91.1%	2.2%	6.7%	77.6%	20.4%	2.0%	83.3%	8.3%	8.3%	76.6%	19.1%	4.3%	84.8%	13.0%	2.2%	93.3%	0.0%	6.7%	90.2%	7.3%	2.4%	92.5%	7.5%	0.0%	82.9%	14.6%	2.4%	
11	和田病院	42	78.7%	16.0%	5.3%	0.0%	100.0%	0.0%	75.0%	25.0%	0.0%	40.0%	40.0%	20.0%	100.0%	0.0%	0.0%	88.9%	0.0%	11.1%	85.7%	14.3%	0.0%	86.7%	6.7%	6.7%	87.5%	12.5%	0.0%	91.7%	8.3%	0.0%	75.0%	16.7%	8.3%	66.7%	16.7%	16.7%	63.6%	36.4%	0.0%	

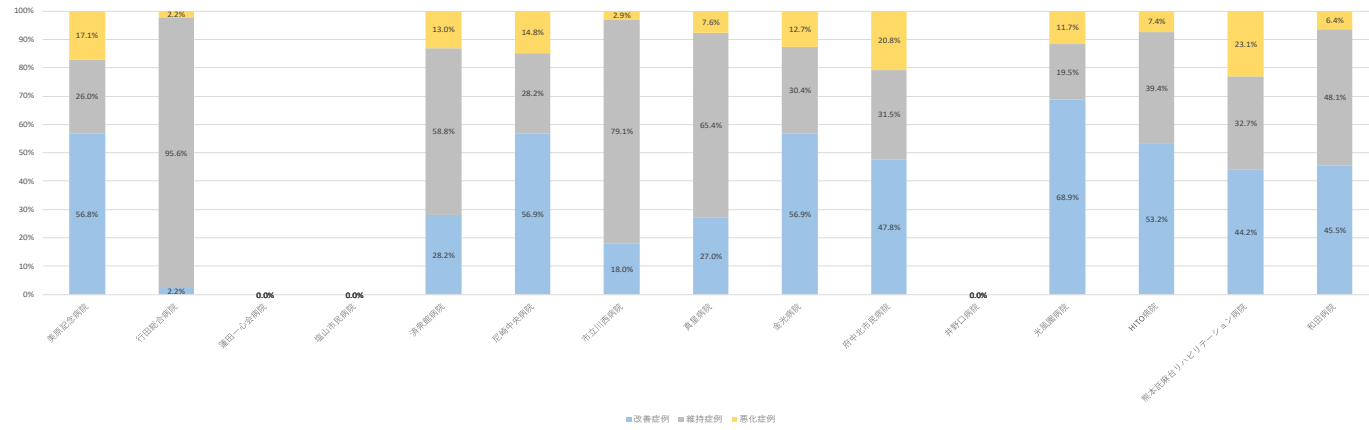
ADLスコアの改善率(回復リハ)(%)(年度平均)



■ ADLスコアの改善率(地域包括ケア)

No	病院名	病床数	2019年度			2019年4月			2019年5月			2019年6月			2019年7月			2019年8月			2019年9月			2019年10月			2019年11月			2019年12月			2020年1月			2020年2月			2020年3月				
			改善症例	維持症例	悪化症例	改善症例	維持症例	悪化症例	改善症例	維持症例	悪化症例	改善症例	維持症例	悪化症例	改善症例	維持症例	悪化症例	改善症例	維持症例	悪化症例	改善症例	維持症例	悪化症例	改善症例	維持症例	悪化症例	改善症例	維持症例	悪化症例	改善症例	維持症例	悪化症例	改善症例	維持症例	悪化症例	改善症例	維持症例	悪化症例					
1	栗原記念病院	16	56.8%	26.0%	17.1%	0.0%	0.0%	0.0%	60.0%	20.0%	20.0%	70.6%	17.6%	11.8%	45.5%	27.3%	27.3%	33.3%	16.7%	50.0%	38.9%	33.3%	27.8%	50.0%	27.8%	22.2%	73.3%	26.7%	0.0%	75.0%	16.7%	8.3%	52.4%	28.6%	19.0%	60.0%	40.0%	0.0%	61.5%	23.1%	15.4%		
2	行田総合病院	51	2.2%	95.6%	2.2%	0.0%	100.0%	0.0%	28.6%	71.4%	0.0%	0.0%	100.0%	0.0%	0.0%	100.0%	0.0%	11.1%	77.8%	11.1%	0.0%	100.0%	0.0%	12.5%	87.5%	0.0%	0.0%	90.0%	10.0%	0.0%	100.0%	0.0%	0.0%	86.7%	13.3%	0.0%	100.0%	0.0%	0.0%	100.0%	0.0%	0.0%	
3	藤田一心斎病院	10	0.0%	0.0%	0.0%	0.0%	0.0%	0.0%	0.0%	0.0%	0.0%	0.0%	0.0%	0.0%	0.0%	0.0%	0.0%	0.0%	0.0%	0.0%	0.0%	0.0%	0.0%	0.0%	0.0%	0.0%	0.0%	0.0%	0.0%	0.0%	0.0%	0.0%	0.0%	0.0%	0.0%	0.0%	0.0%	0.0%	0.0%	0.0%	0.0%	0.0%	
4	塩山市民病院	52	0.0%	0.0%	0.0%	0.0%	0.0%	0.0%	0.0%	0.0%	0.0%	0.0%	0.0%	0.0%	0.0%	0.0%	0.0%	0.0%	0.0%	0.0%	0.0%	0.0%	0.0%	0.0%	0.0%	0.0%	0.0%	0.0%	0.0%	0.0%	0.0%	0.0%	0.0%	0.0%	0.0%	0.0%	0.0%	0.0%	0.0%	0.0%	0.0%	0.0%	0.0%
5	津波聖徳院	60	28.2%	58.8%	13.0%	13.0%	87.0%	0.0%	32.4%	52.9%	14.7%	25.9%	61.1%	13.0%	32.0%	60.0%	8.0%	34.4%	42.2%	23.4%	30.0%	52.0%	18.0%	29.8%	63.8%	6.4%	29.2%	60.4%	10.4%	28.3%	56.6%	15.1%	25.0%	58.3%	16.7%	27.4%	61.3%	11.3%	24.2%	65.2%	10.6%	10.6%	
6	尾崎中央病院	27	56.9%	28.2%	14.8%	0.0%	0.0%	0.0%	0.0%	0.0%	100.0%	55.0%	20.0%	25.0%	69.2%	11.5%	19.2%	43.5%	13.0%	25.0%	70.0%	5.0%	23.5%	76.5%	0.0%	66.7%	22.2%	11.1%	84.2%	10.5%	5.3%	65.0%	15.0%	20.0%	65.2%	17.4%	17.4%	71.4%	9.5%	19.0%			
7	市立川西病院	50	18.0%	79.1%	2.9%	19.2%	78.8%	2.0%	21.1%	74.6%	4.2%	13.6%	80.3%	6.1%	22.4%	77.6%	0.0%	14.7%	82.7%	2.7%	27.7%	70.2%	2.1%	17.2%	77.6%	5.2%	18.2%	80.3%	1.5%	13.1%	86.9%	0.0%	17.6%	81.1%	1.4%	14.9%	78.7%	6.4%	16.1%	77.4%	6.5%		
8	真星病院	26	27.0%	65.4%	7.6%	24.5%	71.4%	4.1%	34.5%	55.2%	10.3%	30.8%	59.0%	10.3%	28.9%	64.4%	6.7%	16.3%	79.1%	4.7%	26.3%	65.8%	7.9%	31.4%	60.0%	8.6%	21.7%	71.7%	6.5%	34.3%	54.3%	11.4%	24.3%	70.3%	5.4%	26.5%	70.6%	2.9%	29.3%	56.1%	14.6%		
9	金光病院	50	56.9%	30.4%	12.7%	60.0%	27.5%	12.5%	53.3%	35.6%	11.1%	58.3%	36.1%	5.6%	48.7%	33.3%	17.9%	50.0%	42.1%	7.9%	60.0%	32.5%	7.5%	57.1%	33.3%	9.5%	66.7%	22.2%	11.1%	62.0%	20.0%	18.0%	59.1%	25.0%	15.9%	57.1%	28.6%	14.3%	51.1%	31.1%	17.8%		
10	柳中北市民病院	60	47.8%	31.5%	20.8%	47.2%	36.1%	16.7%	46.7%	24.4%	28.9%	33.3%	38.1%	28.6%	50.0%	34.6%	15.4%	48.3%	32.8%	19.0%	42.6%	36.2%	21.3%	47.8%	39.1%	13.0%	31.9%	31.9%	36.2%	54.2%	28.8%	16.9%	60.4%	12.5%	27.1%	48.8%	36.6%	14.6%	56.1%	29.8%	14.0%		
11	丹野仁病院	48	-	-	-	-	-	-	-	-	-	-	-	-	-	-	-	-	-	-	-	-	-	-	-	-	-	-	-	-	-	-	-	-	-	-	-	-	-	-	-		
12	花道順病院	60	68.9%	19.5%	11.7%	50.0%	25.0%	25.0%	54.5%	36.4%	9.1%	64.3%	17.9%	17.9%	70.0%	10.0%	20.0%	67.9%	25.0%	7.1%	79.2%	20.8%	0.0%	72.7%	18.2%	9.1%	71.4%	19.0%	9.5%	70.0%	20.0%	10.0%	60.9%	13.0%	26.1%	72.7%	22.7%	4.5%	70.6%	17.6%	11.8%		
13	HITO病院	53	53.2%	39.4%	7.4%	53.1%	32.7%	14.3%	57.1%	35.7%	7.1%	48.5%	42.6%	8.8%	51.8%	39.3%	8.9%	50.0%	43.1%	6.9%	60.7%	37.7%	1.6%	48.3%	51.7%	0.0%	62.1%	30.3%	7.6%	52.6%	37.2%	10.3%	51.7%	41.4%	6.9%	45.9%	42.6%	11.5%	57.1%	38.1%	4.8%		
14	熊本荘寿荘リハビリテーション病院	10	44.2%	32.7%	23.1%	0.0%	100.0%	0.0%	60.0%	40.0%	0.0%	28.6%	28.6%	42.9%	36.4%	36.4%	27.3%	63.6%	0.0%	36.4%	62.5%	25.0%	12.5%	44.4%	22.2%	33.3%	61.5%	15.4%	23.1%	37.5%	25.0%	37.5%	36.4%	54.5%	9.1%	42.9%	28.6%	28.6%	25.0%	66.7%	8.3%		
15	和国病院	30	45.5%	48.1%	6.4%	100.0%	0.0%	0.0%	50.0%	50.0%	0.0%	45.0%	55.0%	0.0%	50.0%	42.9%	7.1%	46.2%	46.2%	7.7%	40.9%	50.0%	9.1%	68.0%	32.0%	0.0%	33.3%	61.9%	4.8%	47.6%	42.9%	9.5%	42.1%	42.1%	15.8%	45.2%	51.6%	3.2%	29.2%	58.3%	12.5%		

ADLスコアの改善率(地域包括ケア)(%)(年度平均)



■ ADLスコアの改善率(療養)

No	病院名	主目的	病床数	2019年度			2019年4月			2019年5月			2019年6月			2019年7月			2019年8月			2019年9月			2019年10月			2019年11月			2019年12月			2020年1月			2020年2月			2020年3月		
				改善率	維持率	悪化率	改善率	維持率	悪化率	改善率	維持率	悪化率	改善率	維持率	悪化率	改善率	維持率	悪化率	改善率	維持率	悪化率	改善率	維持率	悪化率	改善率	維持率	悪化率	改善率	維持率	悪化率	改善率	維持率	悪化率	改善率	維持率	悪化率	改善率	維持率	悪化率			
1	同友記念病院		30	46.1%	43.3%	10.6%	40.0%	33.3%	26.7%	25.0%	66.7%	8.3%	33.3%	55.6%	11.1%	66.7%	33.3%	0.0%	57.1%	42.9%	0.0%	22.2%	66.7%	11.1%	46.2%	38.5%	15.4%	54.5%	45.5%	0.0%	52.6%	42.1%	5.3%	37.5%	50.0%	12.5%	60.0%	30.0%	10.0%	63.6%	18.2%	18.2%
2	尼崎中央病院		48	39.3%	57.1%	3.6%	0.0%	0.0%	0.0%	66.7%	33.3%	0.0%	100.0%	0.0%	0.0%	66.7%	33.3%	0.0%	50.0%	50.0%	0.0%	100.0%	0.0%	0.0%	100.0%	0.0%	33.3%	66.7%	0.0%	25.0%	50.0%	25.0%	0.0%	100.0%	0.0%	33.3%	66.7%	0.0%	0.0%	100.0%	0.0%	
3	真星病院		90	12.9%	64.5%	22.6%	0.0%	66.7%	33.3%	0.0%	50.0%	50.0%	0.0%	100.0%	0.0%	0.0%	100.0%	0.0%	0.0%	75.0%	25.0%	50.0%	50.0%	0.0%	50.0%	50.0%	0.0%	0.0%	100.0%	20.0%	80.0%	0.0%	0.0%	100.0%	0.0%	0.0%	100.0%	20.0%	40.0%	40.0%		
4	井野口病院		42	-	-	-	-	-	-	-	-	-	-	-	-	-	-	-	-	-	-	-	-	-	-	-	-	-	-	-	-	-	-	-	-	-	-	-	-			
5	金光病院		47	42.1%	26.3%	31.6%	75.0%	0.0%	25.0%	0.0%	100.0%	0.0%	66.7%	0.0%	33.3%	100.0%	0.0%	0.0%	50.0%	0.0%	50.0%	0.0%	0.0%	0.0%	0.0%	0.0%	100.0%	0.0%	0.0%	0.0%	0.0%	100.0%	0.0%	0.0%	0.0%	0.0%	0.0%	50.0%	50.0%	0.0%	50.0%	50.0%
6	済衆館病院		93	40.0%	60.0%	0.0%	0.0%	0.0%	0.0%	0.0%	100.0%	0.0%	0.0%	0.0%	0.0%	0.0%	0.0%	0.0%	0.0%	0.0%	0.0%	0.0%	0.0%	0.0%	0.0%	0.0%	0.0%	0.0%	0.0%	0.0%	0.0%	0.0%	0.0%	0.0%	0.0%	0.0%	0.0%	0.0%	0.0%	0.0%	0.0%	
7	行田総合病院		54	3.0%	97.0%	0.0%	0.0%	0.0%	0.0%	0.0%	0.0%	0.0%	100.0%	0.0%	0.0%	100.0%	0.0%	0.0%	100.0%	0.0%	0.0%	0.0%	0.0%	0.0%	0.0%	100.0%	0.0%	0.0%	0.0%	0.0%	0.0%	0.0%	0.0%	0.0%	0.0%	0.0%	0.0%	0.0%	0.0%	0.0%	0.0%	
8	大久野病院		50	27.5%	58.8%	13.7%	0.0%	80.0%	20.0%	33.3%	66.7%	0.0%	40.0%	60.0%	0.0%	42.9%	57.1%	0.0%	100.0%	0.0%	25.0%	50.0%	25.0%	0.0%	60.0%	20.0%	60.0%	20.0%	33.3%	33.3%	33.3%	40.0%	60.0%	0.0%	37.5%	37.5%	25.0%	0.0%	100.0%	0.0%		
9	福山市院病院		59	0.0%	100.0%	0.0%	0.0%	0.0%	0.0%	0.0%	0.0%	0.0%	0.0%	0.0%	0.0%	0.0%	0.0%	0.0%	0.0%	0.0%	0.0%	0.0%	0.0%	0.0%	0.0%	0.0%	0.0%	0.0%	0.0%	0.0%	0.0%	0.0%	0.0%	0.0%	0.0%	0.0%	0.0%	0.0%	0.0%	0.0%		
10	光風園病院		155	42.9%	42.9%	14.3%	0.0%	50.0%	50.0%	100.0%	0.0%	0.0%	100.0%	0.0%	0.0%	100.0%	0.0%	0.0%	50.0%	50.0%	0.0%	0.0%	0.0%	0.0%	0.0%	0.0%	0.0%	0.0%	0.0%	0.0%	0.0%	0.0%	0.0%	0.0%	0.0%	0.0%	0.0%	0.0%	0.0%	0.0%	0.0%	
11	和田病院		40	42.9%	42.9%	14.3%	0.0%	0.0%	0.0%	0.0%	0.0%	0.0%	0.0%	0.0%	0.0%	0.0%	0.0%	0.0%	50.0%	50.0%	0.0%	0.0%	0.0%	0.0%	33.3%	33.3%	33.3%	50.0%	50.0%	0.0%	33.3%	33.3%	33.3%	0.0%	100.0%	0.0%	0.0%	0.0%	0.0%	0.0%	0.0%	

ADLスコアの改善率(療養)(%)(年度平均)

