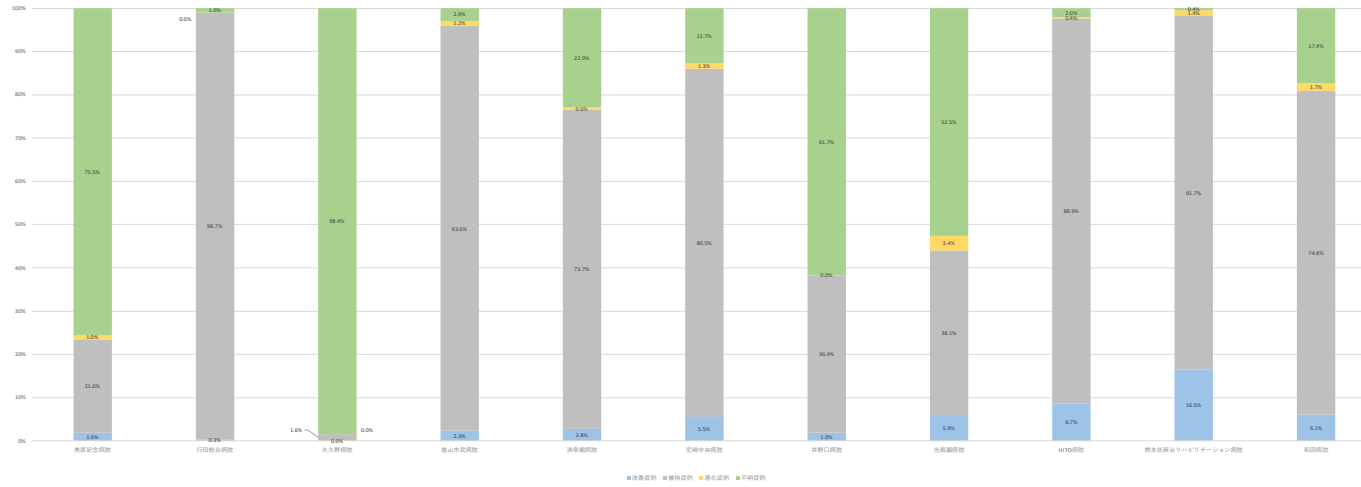


■ 要介護情報_低栄養(回復リハ)

No	施設名	2020年3月				2020年4月				2020年5月				2020年6月				2020年7月				2020年8月				2020年9月				2020年10月				2020年11月				2020年12月				2021年1月				2021年2月				2021年3月								
		調査日	調査人数	調査割合	調査割合	調査日	調査人数	調査割合	調査割合	調査日	調査人数	調査割合	調査割合	調査日	調査人数	調査割合	調査割合	調査日	調査人数	調査割合	調査割合	調査日	調査人数	調査割合	調査割合	調査日	調査人数	調査割合	調査割合	調査日	調査人数	調査割合	調査割合	調査日	調査人数	調査割合	調査割合	調査日	調査人数	調査割合	調査割合																	
1	東海記念病院	81	1.9%	21.4%	1.0%	75.1%	10.3%	24.1%	0.0%	65.5%	3.3%	19.4%	0.0%	77.4%	7.1%	17.9%	7.1%	67.9%	0.0%	23.7%	0.0%	76.3%	0.0%	22.5%	2.5%	76.0%	0.0%	26.0%	0.0%	75.0%	2.0%	20.6%	0.0%	76.5%	0.0%	30.0%	0.0%	80.0%	0.0%	15.6%	0.5%	84.4%	0.0%	25.0%	2.8%	72.7%	2.0%	20.0%	0.0%	75.9%	0.0%	22.7%	0.0%	77.3%				
2	行田総合病院	80	0.3%	98.2%	0.0%	1.0%	0.0%	100.0%	0.0%	0.0%	0.0%	100.0%	0.0%	0.0%	0.0%	100.0%	0.0%	2.0%	97.1%	0.0%	0.0%	0.0%	100.0%	0.0%	0.0%	0.0%	97.7%	0.0%	2.3%	0.0%	100.0%	0.0%	0.0%	0.0%	97.6%	0.0%	2.4%	0.0%	100.0%	0.0%	0.0%	0.0%	100.0%	0.0%	0.0%	0.0%	100.0%	0.0%	0.0%	0.0%	100.0%	0.0%	0.0%	0.0%	100.0%			
3	大木病院	52	0.0%	1.4%	0.0%	96.4%	0.0%	0.0%	0.0%	100.0%	0.0%	0.0%	0.0%	0.0%	100.0%	0.0%	0.0%	0.0%	0.0%	0.0%	0.0%	100.0%	0.0%	0.0%	0.0%	100.0%	0.0%	0.0%	0.0%	100.0%	0.0%	0.0%	0.0%	100.0%	0.0%	0.0%	0.0%	100.0%	0.0%	0.0%	0.0%	100.0%	0.0%	0.0%	0.0%	100.0%	0.0%	0.0%	0.0%	100.0%	0.0%	0.0%	0.0%	100.0%	0.0%	0.0%	0.0%	100.0%
4	福山中央病院	50	2.3%	93.0%	1.2%	2.9%	0.0%	100.0%	0.0%	0.0%	90.9%	4.5%	4.5%	0.0%	92.0%	7.1%	0.0%	11.1%	88.9%	0.0%	0.0%	15.8%	84.2%	0.0%	0.0%	0.0%	100.0%	0.0%	0.0%	91.7%	0.0%	8.3%	0.0%	100.0%	0.0%	0.0%	0.0%	80.0%	0.0%	80.0%	0.0%	20.0%	0.0%	94.4%	0.0%	8.6%	0.0%	100.0%	0.0%	0.0%	0.0%	0.0%						
5	東海病院	50	2.8%	73.7%	0.0%	22.9%	0.0%	80.0%	0.0%	20.0%	2.8%	0.0%	0.0%	0.0%	81.5%	0.0%	0.0%	66.3%	0.0%	36.8%	0.0%	61.3%	0.0%	38.7%	2.8%	83.9%	2.8%	80.6%	0.0%	64.7%	0.0%	32.4%	2.7%	82.6%	0.0%	18.7%	0.0%	88.0%	0.0%	12.0%	0.0%	88.0%	0.0%	12.0%	0.0%	88.0%	0.0%	12.0%	0.0%	88.0%								
6	伊豆中央病院	45	5.5%	89.1%	1.1%	12.2%	0.0%	100.0%	0.0%	0.0%	18.9%	61.3%	0.0%	0.0%	11.8%	88.2%	0.0%	0.0%	5.0%	95.0%	0.0%	0.0%	63.1%	7.1%	7.1%	0.0%	64.3%	0.0%	35.7%	0.0%	89.5%	0.0%	10.5%	4.2%	33.3%	6.7%	89.3%	11.8%	64.9%	0.0%	23.5%	7.7%	84.6%	0.0%	7.7%	6.3%	97.5%	0.0%	6.3%	0.0%	97.5%							
7	伊藤病院	40	1.9%	36.4%	0.0%	61.7%	0.0%	0.0%	0.0%	0.0%	0.0%	0.0%	0.0%	83.3%	0.0%	16.7%	0.0%	50.0%	0.0%	50.0%	0.0%	50.0%	0.0%	50.0%	0.0%	38.4%	0.0%	63.6%	0.0%	33.3%	0.0%	66.7%	0.0%	21.4%	0.0%	78.6%	13.3%	53.3%	0.0%	33.3%	4.2%	16.7%	0.0%	79.2%	0.0%	38.0%	0.0%	61.1%	0.0%	44.4%	0.0%	55.6%	0.0%	27.8%	0.0%	72.2%		
8	東海病院	40	5.5%	38.1%	2.4%	52.4%	10.7%	42.9%	0.0%	42.9%	0.0%	48.9%	13.3%	0.0%	50.0%	4.2%	48.9%	2.8%	34.6%	3.8%	51.7%	0.0%	60.0%	4.0%	48.9%	0.0%	8.7%	91.3%	0.0%	11.5%	88.5%	0.0%	0.0%	91.3%	0.0%	10.0%	10.0%	90.0%	0.0%	9.1%	90.9%	0.0%	10.0%	10.0%	90.0%	0.0%	10.0%	10.0%	90.0%									
9	WTC病院	50	8.7%	88.9%	0.8%	2.0%	3.8%	92.3%	0.0%	3.8%	92.4%	0.0%	11.8%	8.7%	87.0%	0.0%	4.3%	0.0%	100.0%	0.0%	0.0%	11.5%	88.5%	0.0%	0.0%	8.7%	91.3%	0.0%	11.5%	88.5%	0.0%	0.0%	91.3%	0.0%	10.0%	10.0%	90.0%	0.0%	16.7%	83.3%	0.0%	0.0%	13.3%	86.7%	0.0%	0.0%	13.0%	87.0%	0.0%	0.0%	13.0%	87.0%						
10	熊本県済生会パロリンナーシホシホシ病院	94	16.5%	81.7%	1.4%	0.4%	32.5%	87.4%	0.0%	0.0%	30.0%	66.0%	4.0%	0.0%	28.7%	71.7%	0.0%	0.0%	32.0%	67.4%	0.0%	0.0%	32.0%	67.4%	0.0%	0.0%	32.0%	67.4%	0.0%	0.0%	32.0%	67.4%	0.0%	0.0%	32.0%	67.4%	0.0%	0.0%	32.0%	67.4%	0.0%	0.0%	32.0%	67.4%	0.0%	0.0%	32.0%	67.4%	0.0%	0.0%	32.0%	67.4%						
11	福岡院	42	6.1%	74.8%	1.7%	17.4%	0.0%	100.0%	0.0%	0.0%	12.5%	87.5%	0.0%	0.0%	100.0%	0.0%	0.0%	0.0%	100.0%	0.0%	0.0%	0.0%	100.0%	0.0%	0.0%	11.1%	77.8%	11.1%	0.0%	12.2%	62.2%	12.2%	12.2%	30.0%	60.0%	0.0%	30.0%	0.0%	30.0%	0.0%	30.0%	0.0%	30.0%	0.0%	30.0%	0.0%	30.0%	0.0%	30.0%	0.0%	30.0%	0.0%	30.0%					

要介護情報_低栄養(回復リハ)(年度平均)



■ 要介護情報_低栄養(地域包括ケア)

No.	施設名	2020年4月				2020年4月				2020年5月				2020年6月				2020年7月				2020年8月				2020年9月				2020年10月				2020年11月				2020年12月				2021年1月				2021年2月				2021年3月					
		要介護1	要介護2	要介護3	要介護4	要介護5	軽度認知障害	重度認知障害	要介護1	要介護2	要介護3	要介護4	要介護5	軽度認知障害	重度認知障害	要介護1	要介護2	要介護3	要介護4	要介護5	軽度認知障害	重度認知障害	要介護1	要介護2	要介護3	要介護4	要介護5	軽度認知障害	重度認知障害	要介護1	要介護2	要介護3	要介護4	要介護5	軽度認知障害	重度認知障害	要介護1	要介護2	要介護3	要介護4	要介護5	軽度認知障害	重度認知障害	要介護1	要介護2	要介護3	要介護4	要介護5	軽度認知障害	重度認知障害					
101	聖徳記念病院	14	3.1%	34.3%	1.0%	61.2%	5.0%	16.7%	0.0%	77.8%	0.0%	50.0%	0.0%	50.0%	0.0%	47.1%	0.0%	52.9%	0.0%	41.7%	0.0%	58.3%	0.0%	28.6%	7.1%	64.3%	3.5%	36.8%	0.0%	57.0%	0.0%	35.3%	5.9%	58.8%	5.0%	23.5%	0.0%	70.6%	0.0%	30.8%	0.5%	66.2%	8.3%	16.1%	0.0%	75.0%	5.1%	31.0%	0.0%	63.3%	4.2%	50.0%	0.0%	48.6%	
1	日蓮宗徳成院	11	0.3%	97.6%	0.0%	2.1%	0.0%	95.8%	0.0%	4.2%	0.0%	97.8%	0.0%	2.2%	0.0%	100.0%	0.0%	0.0%	2.0%	95.9%	0.0%	2.0%	0.0%	100.0%	0.0%	0.0%	0.0%	96.6%	0.0%	3.4%	0.0%	96.8%	0.0%	3.2%	0.0%	100.0%	0.0%	0.0%	0.0%	0.0%	0.0%	0.0%	0.0%	0.0%	0.0%	0.0%	0.0%	0.0%	0.0%	0.0%	0.0%	0.0%	0.0%	0.0%	
3	聖心会病院	11	0.0%	80.0%	10.0%	0.0%	0.0%	0.0%	0.0%	0.0%	0.0%	0.0%	0.0%	0.0%	0.0%	0.0%	0.0%	0.0%	0.0%	0.0%	0.0%	0.0%	0.0%	0.0%	0.0%	0.0%	0.0%	0.0%	0.0%	0.0%	0.0%	0.0%	0.0%	0.0%	0.0%	0.0%	0.0%	0.0%	0.0%	0.0%	0.0%	0.0%	0.0%	0.0%	0.0%	0.0%	0.0%	0.0%	0.0%	0.0%	0.0%	0.0%	0.0%	0.0%	
4	徳島赤十字病院	17	3.3%	95.9%	0.8%	0.0%	0.0%	0.0%	0.0%	0.0%	0.0%	0.0%	0.0%	0.0%	0.0%	0.0%	0.0%	0.0%	0.0%	0.0%	0.0%	0.0%	0.0%	0.0%	0.0%	0.0%	0.0%	0.0%	0.0%	0.0%	0.0%	0.0%	0.0%	0.0%	0.0%	0.0%	0.0%	0.0%	0.0%	0.0%	0.0%	0.0%	0.0%	0.0%	0.0%	0.0%	0.0%	0.0%	0.0%	0.0%	0.0%	0.0%	0.0%	0.0%	
5	赤十字病院	60	3.2%	52.0%	2.1%	42.7%	0.0%	99.7%	2.4%	2.3%	22.9%	60.9%	8.3%	3.8%	63.3%	7.7%	25.0%	7.8%	52.9%	0.0%	39.7%	2.0%	52.9%	20.0%	45.1%	0.0%	58.7%	2.2%	80.1%	2.7%	52.1%	1.9%	43.0%	1.0%	45.6%	0.3%	60.1%	4.9%	65.2%	2.6%	50.3%	3.3%	62.6%	3.3%	50.9%	4.8%	35.3%	0.0%	59.7%	41.1%	34.1%	0.0%	41.9%		
6	聖心会病院	21	10.5%	82.0%	6.3%	9.8%	11.1%	81.5%	7.4%	0.0%	25.0%	66.7%	8.3%	0.0%	17.6%	70.6%	11.0%	0.0%	14.3%	85.7%	0.0%	0.0%	0.0%	0.0%	0.0%	0.0%	0.0%	0.0%	0.0%	0.0%	0.0%	0.0%	0.0%	0.0%	0.0%	0.0%	0.0%	0.0%	0.0%	0.0%	0.0%	0.0%	0.0%	0.0%	0.0%	0.0%	0.0%	0.0%	0.0%	0.0%	0.0%	0.0%	0.0%	0.0%	0.0%
7	石川赤十字病院	50	0.0%	80.2%	0.0%	19.8%	0.0%	76.2%	0.0%	23.8%	0.0%	66.7%	0.0%	53.3%	0.0%	100.0%	0.0%	0.0%	75.0%	0.0%	25.0%	0.0%	90.9%	0.0%	0.0%	0.0%	0.0%	0.0%	0.0%	0.0%	0.0%	0.0%	0.0%	0.0%	0.0%	0.0%	0.0%	0.0%	0.0%	0.0%	0.0%	0.0%	0.0%	0.0%	0.0%	0.0%	0.0%	0.0%	0.0%	0.0%	0.0%	0.0%	0.0%	0.0%	
8	聖徳記念病院	26	2.1%	44.4%	0.3%	52.7%	2.8%	63.8%	0.0%	13.3%	0.0%	71.0%	0.0%	3.8%	60.0%	3.0%	24.1%	5.7%	34.3%	0.0%	60.0%	2.3%	73.6%	0.0%	17.6%	0.0%	27.6%	0.0%	32.4%	0.0%	55.4%	2.1%	62.5%	0.0%	81.2%	0.0%	51.7%	18.9%	2.6%	56.4%	4.2%	33.1%	0.0%	62.1%	0.0%	40.0%	0.0%	50.6%	2.5%	60.0%	0.0%	37.5%			
9	聖光病院	10	6.2%	76.7%	0.3%	16.9%	4.9%	80.5%	0.0%	14.0%	10.0%	76.0%	0.0%	14.0%	0.0%	65.7%	0.0%	14.3%	13.0%	67.4%	0.0%	19.6%	2.2%	73.6%	0.0%	32.2%	12.8%	69.2%	2.6%	15.4%	6.4%	80.9%	0.0%	12.8%	2.8%	83.3%	0.0%	13.9%	2.0%	74.5%	0.5%	23.5%													
10	聖心会病院	60	11.5%	68.2%	7.8%	12.4%	4.5%	69.4%	0.0%	25.8%	2.2%	76.1%	2.2%	13.6%	8.9%	62.5%	7.1%	21.4%	15.5%	72.2%	2.0%	4.2%	21.1%	52.7%	14.1%	7.0%	8.9%	60.0%	6.0%	26.0%	14.7%	66.2%	10.1%	8.0%	14.3%	69.4%	10.2%	6.1%	1.7%	89.2%	6.9%	5.2%	13.6%	68.2%	13.6%	4.5%	14.3%	63.3%	6.1%	16.3%	15.4%	67.3%	9.6%	7.7%	
11	日蓮宗徳成院	64	4.1%	41.1%	2.7%	51.6%	7.7%	84.6%	0.0%	7.7%	0.0%	51.4%	2.7%	45.9%	4.0%	58.0%	4.0%	34.0%	8.0%	69.0%	0.0%	34.0%	4.0%	53.1%	10.2%	32.7%	2.2%	47.8%	2.2%	47.0%	3.1%	36.2%	1.3%	58.5%	5.7%	45.7%	3.0%	62.2%	5.0%	37.7%	3.9%	52.6%	2.0%	34.1%	2.8%	61.2%	7.7%	15.9%	0.0%	79.9%	3.7%	49.1%	1.9%	74.4%	
12	聖徳記念病院	60	2.3%	18.1%	1.9%	78.2%	3.7%	70.4%	0.0%	25.9%	3.3%	31.3%	3.3%	60.0%	0.0%	31.7%	0.0%	64.9%	0.0%	13.6%	4.5%	81.8%	3.3%	80.9%	0.0%	94.7%	0.0%	6.5%	0.0%	93.5%	0.0%	7.1%	0.0%	92.9%	10.0%	13.3%	0.0%	76.7%	3.3%	10.0%	0.0%	86.7%	0.0%	4.5%	4.9%	90.9%	0.0%	0.0%	0.0%	100.0%					
13	日蓮宗徳成院	14	5.8%	90.5%	2.7%	1.5%	18.9%	94.7%	1.0%	0.0%	32.8%	86.3%	0.0%	3.9%	8.8%	87.0%	0.0%	3.4%	1.5%	98.5%	0.0%	0.0%	10.0%	83.6%	0.0%	4.5%	88.8%	0.0%	0.0%	0.0%	7.5%	91.0%	0.0%	1.5%	71.1%	91.1%	3.8%	0.0%	4.9%	67.1%	3.9%	2.3%	91.6%	1.8%	3.5%	4.1%	89.0%	2.0%	8.1%	0.8%	88.9%	4.8%	0.0%		
14	聖徳記念病院/パピロリサーチン病院	10	10.3%	82.5%	2.6%	4.3%	18.2%	72.7%	0.0%	9.1%	22.2%	66.7%	0.0%	11.1%	18.2%	81.8%	0.0%	0.0%	33.3%	66.7%	0.0%	0.0%	90.0%	0.0%	10.0%	0.0%	10.0%	0.0%	10.0%	0.0%	10.0%	0.0%	10.0%	0.0%	10.0%	0.0%	10.0%	0.0%	10.0%	0.0%	10.0%	0.0%	10.0%	0.0%	10.0%	0.0%	10.0%	0.0%	10.0%	0.0%	10.0%				
15	日蓮宗徳成院	30	4.5%	24.0%	1.7%	69.9%	0.0%	63.5%	0.0%	30.4%	0.0%	15.8%	0.0%	84.2%	0.0%	16.7%	6.7%	76.7%	10.7%	32.1%	3.5%	53.6%	8.8%	14.7%	0.0%	76.5%	6.3%	25.0%	0.0%	68.8%	0.0%	7.4%	3.7%	88.9%	0.0%	25.0%	0.0%	75.0%	2.6%	21.1%	2.6%	73.7%	21.1%	21.1%	0.0%	57.9%	0.0%	23.1%	3.8%	73.1%	6.3%	28.1%	0.0%	65.6%	

要介護情報_低栄養(地域包括ケア)(%)(年度平均)

