

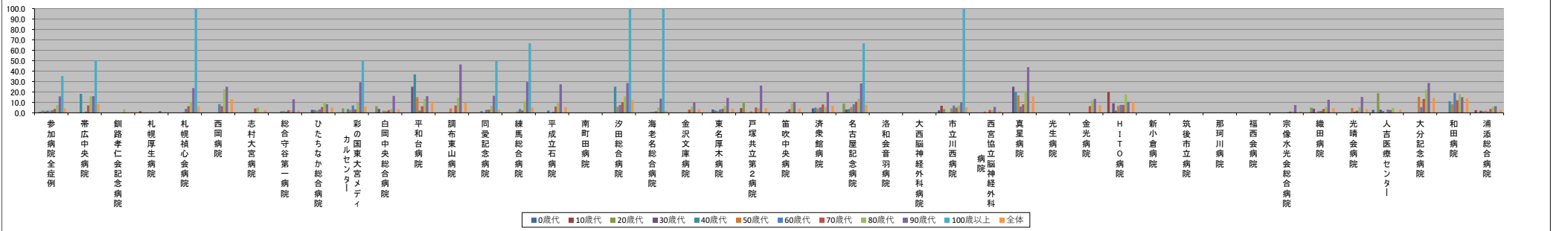
■ 自宅退院患者における在宅医療を受ける率【第3四半期】

※バインフン表記は、2022/06/15時点でデータ未提出の病院です。

Table with 30 columns (hospitals) and 12 rows (age groups and overall). Columns include hospital names like 参加病院全症例, 帯広中央病院, etc. Rows show implementation rates for age groups from 0 to 100+ and overall.

Table with 30 columns (hospitals) and 12 rows (age groups and overall). Columns include hospital names. Rows show the number of patients discharged from home for each age group and overall.

年代別在宅医療の実施率(%)



年代別自宅への退院患者数(人)

