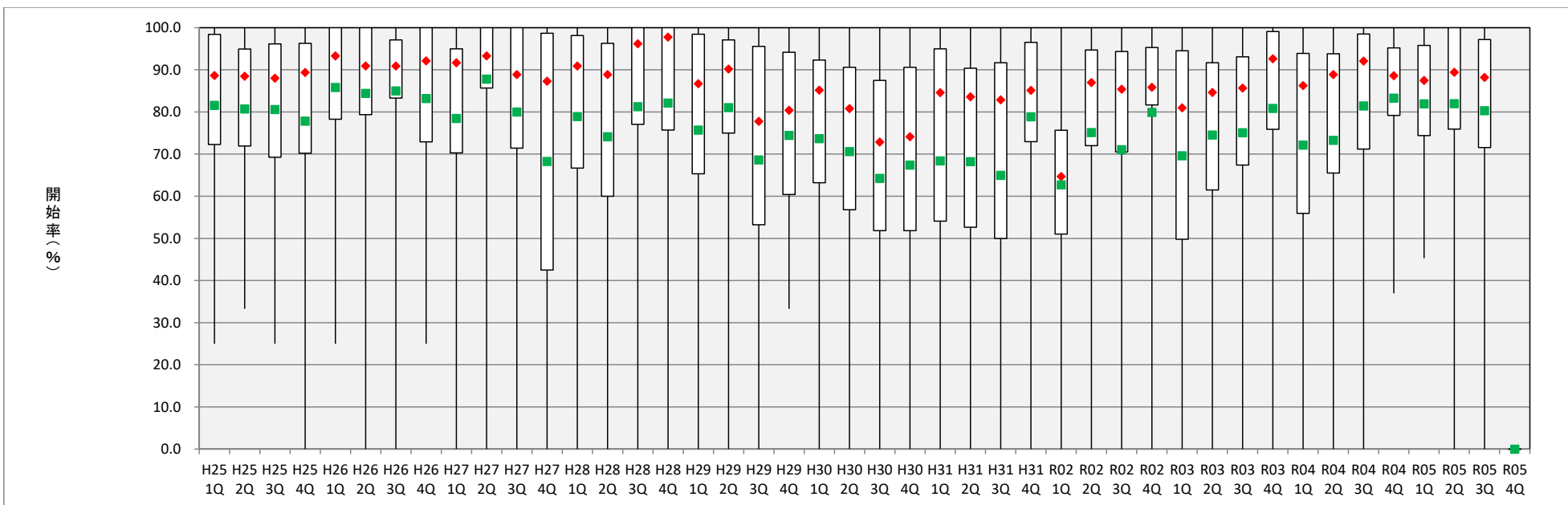


急性脳梗塞患者に対する早期リハビリテーション開始率



	H25 1Q	H25 2Q	H25 3Q	H25 4Q	H26 1Q	H26 2Q	H26 3Q	H26 4Q	H27 1Q	H27 2Q	H27 3Q	H27 4Q	H28 1Q	H28 2Q	H28 3Q	H28 4Q	H29 1Q	H29 2Q	H29 3Q	H29 4Q	H30 1Q	H30 2Q	H30 3Q	H30 4Q	H31 1Q	H31 2Q	H31 3Q	H31 4Q	R02 1Q	R02 2Q	R02 3Q	R02 4Q	R03 1Q	R03 2Q	R03 3Q	R03 4Q	R04 1Q	R04 2Q	R04 3Q	R04 4Q	R05 1Q	R05 2Q	R05 3Q	R05 4Q
最大値	100.0	100.0	100.0	100.0	100.0	100.0	100.0	100.0	100.0	100.0	100.0	100.0	100.0	100.0	100.0	100.0	100.0	100.0	100.0	100.0	100.0	100.0	100.0	100.0	100.0	100.0	100.0	100.0	100.0	100.0	100.0	100.0	100.0	100.0	100.0	100.0	100.0	100.0	100.0	100.0	100.0	100.0	100.0	100.0
75%タイル値	98.4	95.0	96.2	96.3	100.0	100.0	97.1	100.0	95.0	100.0	100.0	98.7	98.1	96.3	100.0	100.0	98.5	97.1	95.6	94.2	92.3	90.6	87.5	90.6	95.0	90.4	91.7	96.5	75.7	94.7	94.4	95.3	94.5	91.7	93.1	99.1	93.9	93.8	98.5	95.2	95.8	100.0	97.2	
25%タイル値	72.3	71.9	69.3	70.2	78.3	79.4	83.3	72.9	70.3	85.7	71.4	42.5	66.7	60.0	77.1	75.7	65.4	75.0	53.3	60.4	63.2	56.8	51.8	51.9	54.1	52.6	50.0	73.0	51.0	72.0	70.5	81.7	49.8	61.5	67.4	75.9	56.0	65.5	71.2	79.2	74.4	75.9	71.6	
最小値	25.0	33.3	25.0	0.0	25.0	0.0	0.0	25.0	0.0	0.0	0.0	0.0	0.0	0.0	0.0	0.0	0.0	0.0	0.0	33.3	0.0	0.0	0.0	0.0	0.0	0.0	0.0	0.0	0.0	0.0	0.0	0.0	0.0	0.0	0.0	0.0	0.0	0.0	0.0	37.0	45.3	0.0	0.0	
中央値	88.7	88.5	88.1	89.4	93.3	90.9	90.9	92.2	91.7	93.3	88.9	87.3	90.9	88.9	96.2	97.8	86.7	90.2	77.8	80.4	85.2	80.8	72.9	74.2	84.6	83.6	82.9	85.2	64.7	87.0	85.4	85.9	81.0	84.7	85.7	92.7	86.3	88.9	92.1	88.6	87.5	89.5	88.2	
平均値	81.6	80.7	80.6	77.8	85.8	84.4	85.0	83.2	78.4	87.8	80.0	68.3	78.9	74.1	81.3	82.1	75.7	81.0	68.6	74.5	73.7	70.6	64.3	67.4	68.4	68.2	65.0	78.9	62.7	75.1	71.1	79.9	69.6	74.5	75.1	80.9	72.2	73.3	81.4	83.3	81.9	82.0	80.3	
対象病院数	34	35	34	36	33	35	33	32	31	33	29	30	34	33	31	30	35	25	27	26	29	29	30	26	39	38	37	28	31	33	31	22	32	28	29	26	36	37	32	25	29	28	22	